



18D

Croft Drive

Milton Park OX14 4RP

[///unicorns.eternity.braced](http://unicorns.eternity.braced)



18D Croft Drive is a character office within a small courtyard of buildings on the edge of Milton Park. The property has been comprehensively refurbished to include new M&E and shower facilities. The property is within walking distance of a number of Park amenities including the Park Club Gym with swimming pool and post office.

Office suites available from 1,107 sq.ft or can be combined to provide 2,508 sq.ft.

Specification

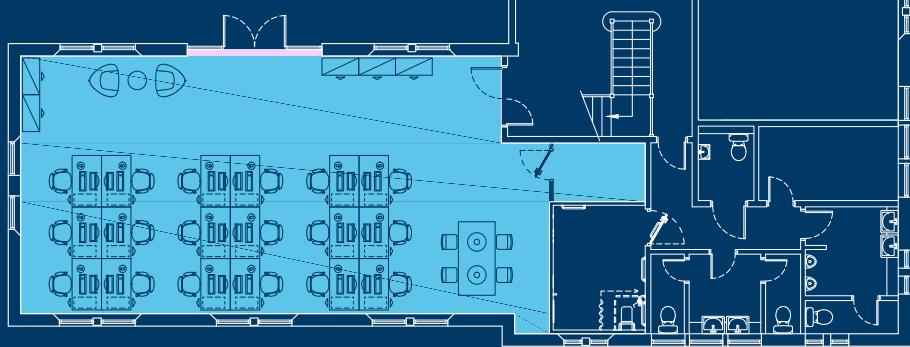
- **Comprehensively refurbished character offices**
- **Located next to Park Club Gym and swimming pool**
- **Fitted office options available**
- **Allocated parking**
- **New M&E and air conditioning throughout**
- **EPC rating B**
- **LED PIR lighting**
- **New Shower facilities**
- **Adjacent lawn area with picnic benches**



Indicative Floorplans

18D Ground Floor

Suite i

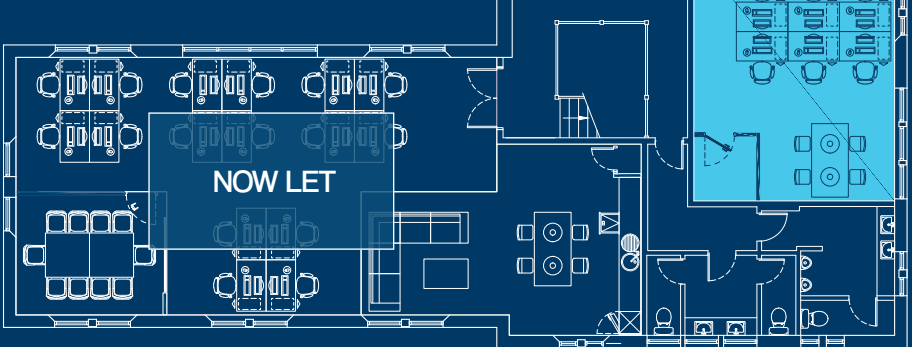


18D Croft Drive	
18D i sq.ft	1,107
18D iv sq.ft	1,401
Total (NIA) sq.ft	2,508
Total (NIA) sq.m	233

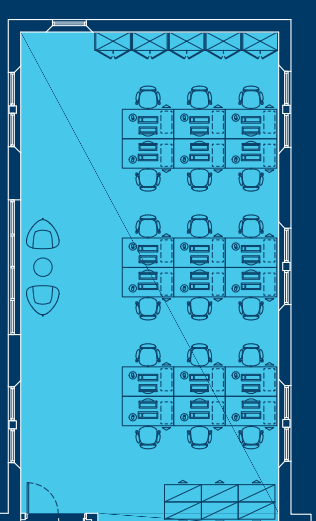
Units can be combined to provide larger premises for single occupation

18D First Floor

Suite iii

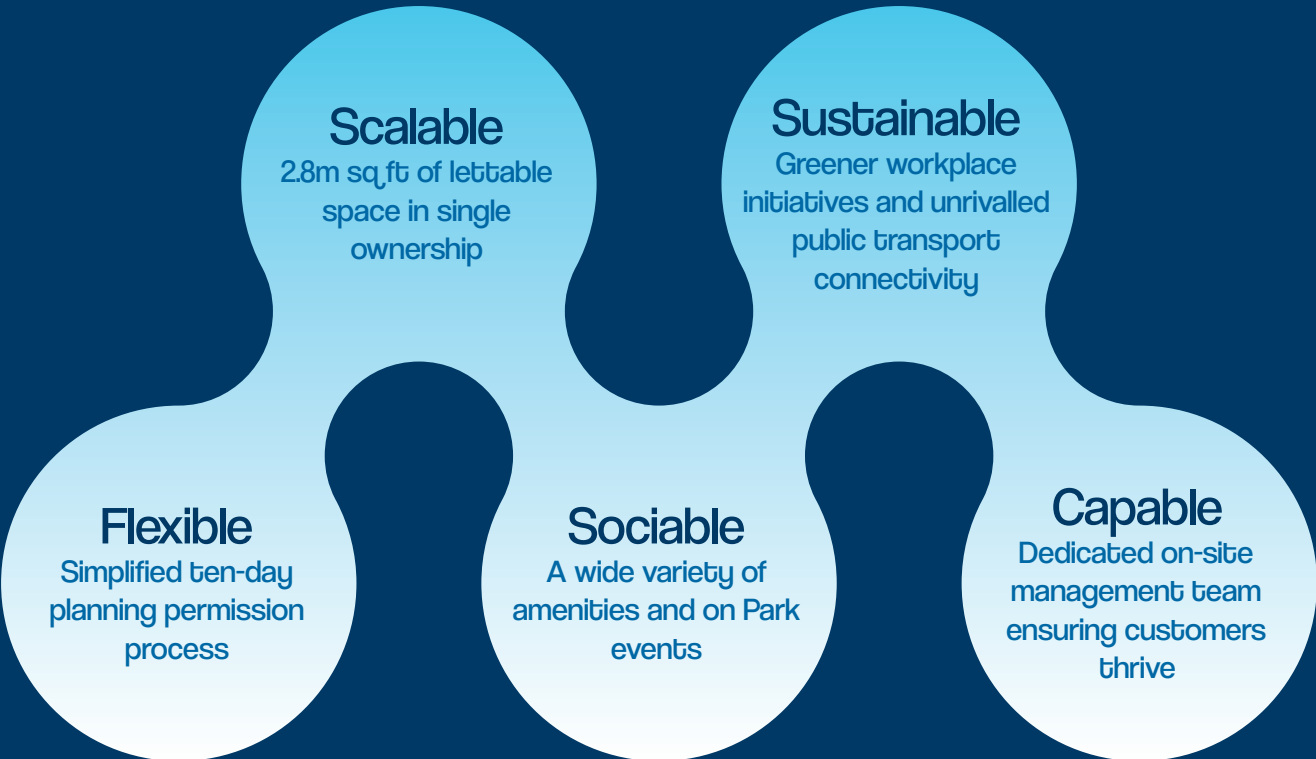


Suite iv

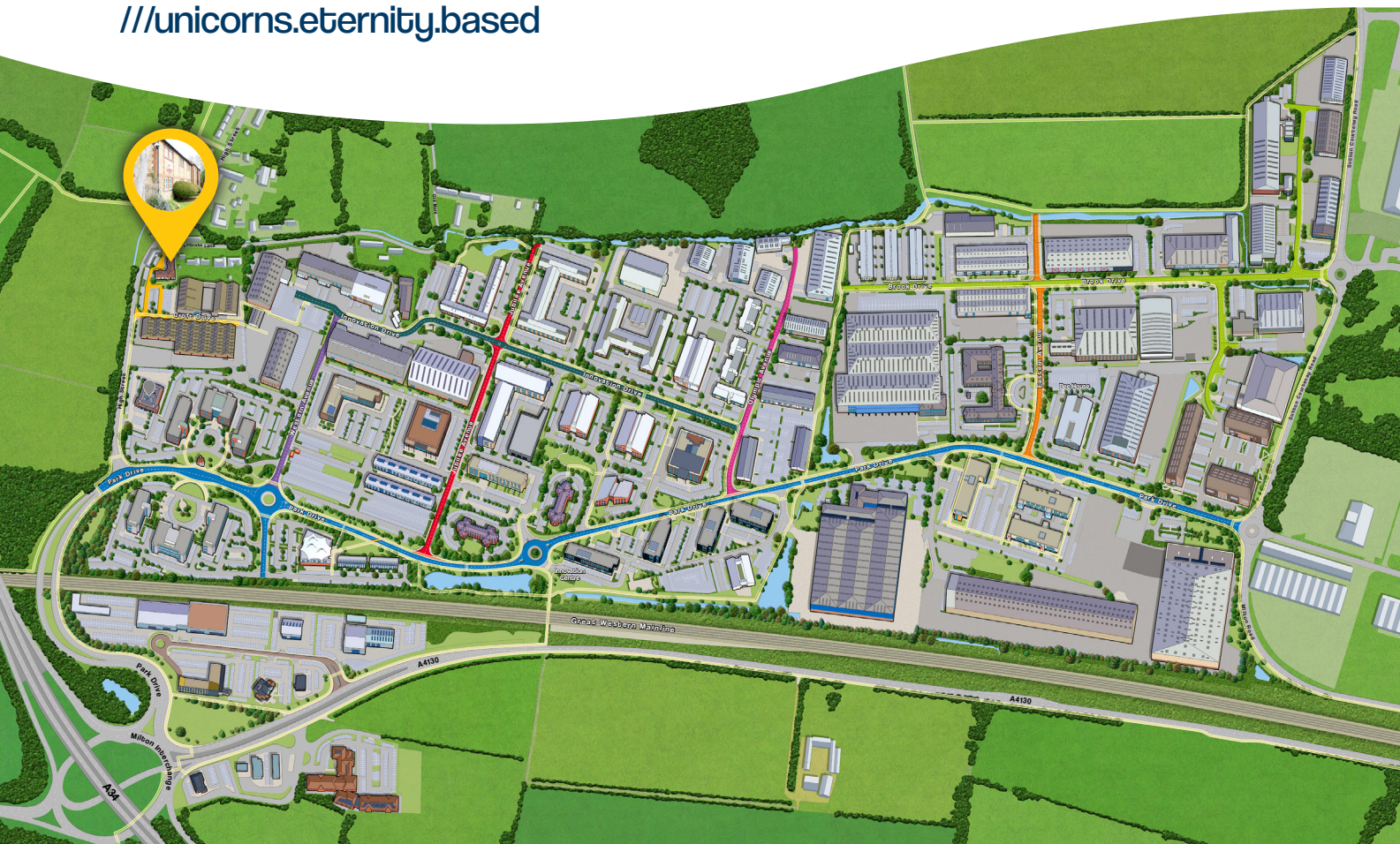


- Key**
- Office
 - Meeting Room
 - Breakout

Milton Park – enabling your business to connect all the dots...



18D Croft Drive, Milton Park, Oxfordshire, OX14 4RP
///unicorns.eternity.based



Get in touch with us...

Milton Park

CBRE

BENEDICTS



Clare Fleet
Commercial Surveyor
clare.fleet@federatedhermes.com
+44 (0)7824 554085



Tom Booker
Commercial Manager
tom.booker@federatedhermes.com
+44 (0)7387 647235



Tom Barton
Leasing Agent
tom.barton@cbre.com
+44 (0)7817 033078



Tom Vecchione
Leasing Agent
tom@benedicts.co.uk
+44 (0)7807 791328



MEPC
Bee House
140 Eastern Avenue
Milton Park
Oxfordshire
OX14 4SB

///feasted.cloud.honeybees

+44 (0)1235 865555
marketing@miltonpark.com
miltonpark.com



Misrepresentations Act 1967: This information has been obtained from sources believed reliable, but has not been verified for accuracy or completeness. You should conduct a careful, independent investigation of the property and verify all information. Any reliance on this information is solely at your own risk. MEPC Milton GP Ltd and its associated agents and their logos are service marks of MEPC Milton GP Ltd and its associated agents, Inc. All other marks on this document are the property of their respective owners. Use of these images without the express written consent of the owner is prohibited. December 2025.

