



# 97

Jubilee Avenue

Milton Park OX14 4RW

[///rainwaterfoil.swift](http://rainwaterfoil.swift)





97 Jubilee Avenue comprises a modern, detached Grade A office building. The property occupies a central location on Milton Park and therefore benefits from being within walking distance of a range of amenities including Pierreponts Cafe, Dress'd salad bar and Signal Yard.

Upon entering the building, there is a shared reception area, with 12,203 sq.ft of available space on the ground floor and 12,562 sq.ft on the first floor. The suites have recently been redecorated and provide a mix of open plan accommodation alongside various meeting rooms, with the additional benefit of a kitchen / breakout space.

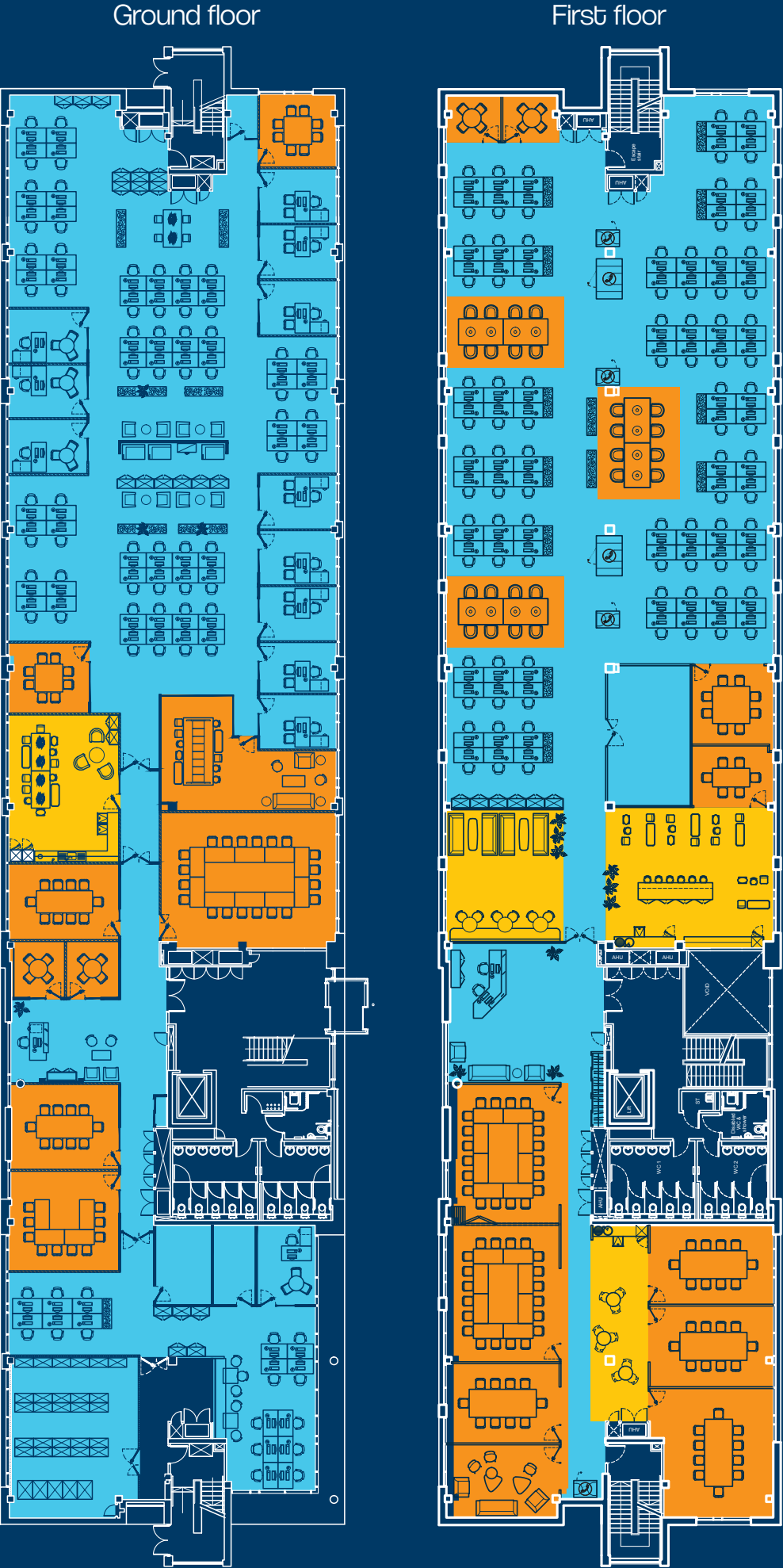
# Specification

- **Shared reception area**
- **45 allocated car parking spaces per floor**
- **Suspended ceiling with LED lighting**
- **EPC rating B**
- **Air conditioning**
- **Flexible floor plate**
- **Kitchen and breakout area**
- **Coloured feature windows**
- **Floor boxes**



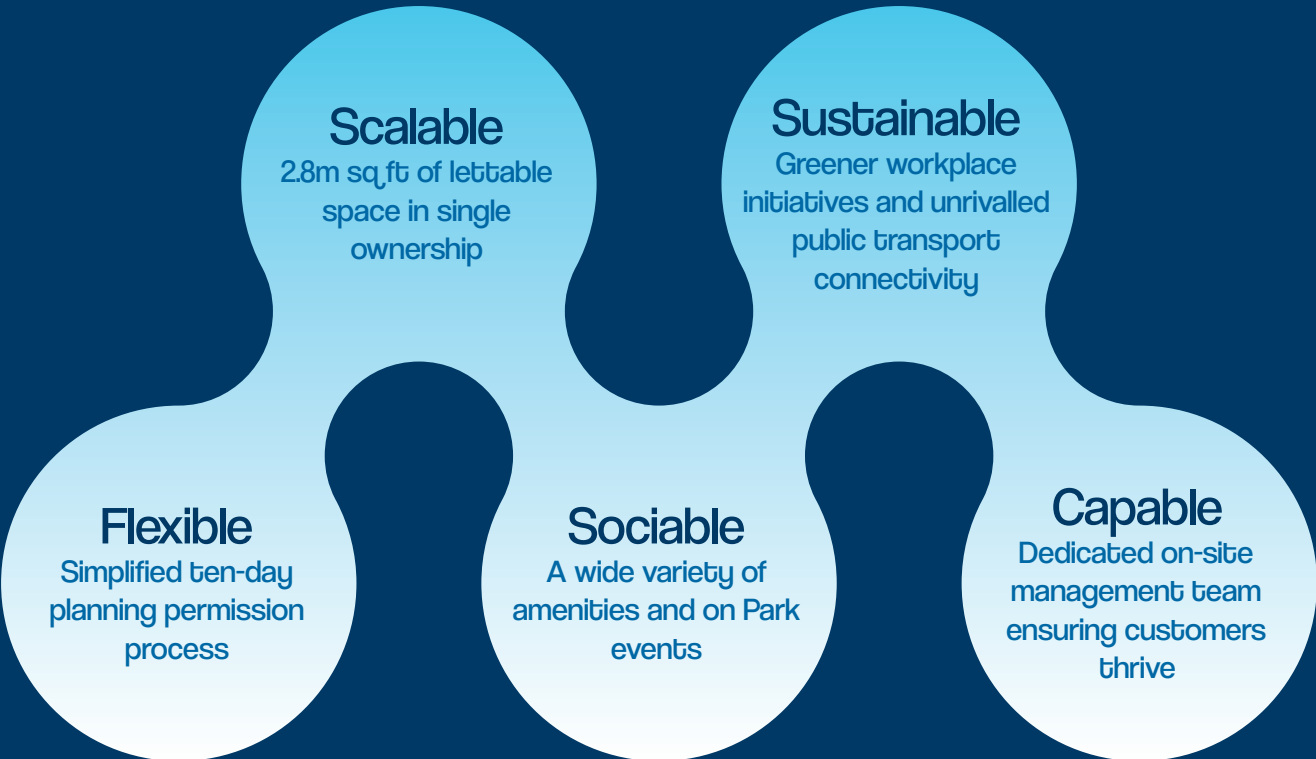
## Floorplans

- Key**
- Office
  - Meeting Room
  - Breakout

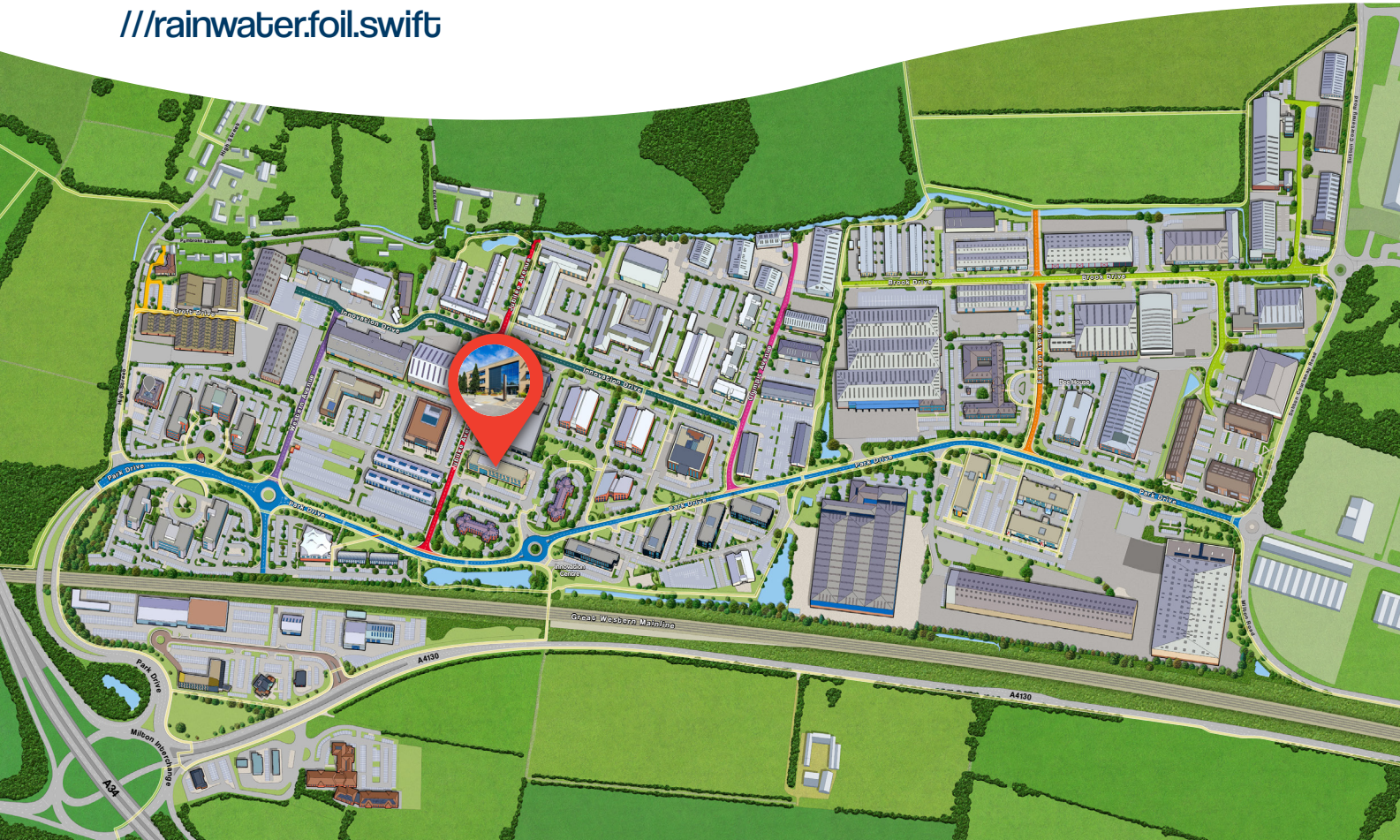




Milton Park – enabling your business to connect all the dots...



97 Jubilee Avenue  
Milton Park OX14 4RW  
[///rainwater.foil.swift](http://rainwater.foil.swift)



Get in touch with us...

Milton Park

CBRE

BENEDICTS



Clare Fleet  
Commercial Surveyor  
[clare.fleet@federatedhermes.com](mailto:clare.fleet@federatedhermes.com)  
+44 (0)7824 554085



Tom Booker  
Commercial Manager  
[tom.booker@federatedhermes.com](mailto:tom.booker@federatedhermes.com)  
+44 (0)7387 647235



Tom Barton  
Leasing Agent  
[tom.barton@cbre.com](mailto:tom.barton@cbre.com)  
+44 (0)7817 033078



Tom Vecchione  
Leasing Agent  
[tom@benedicts.co.uk](mailto:tom@benedicts.co.uk)  
+44 (0)7807 791328



MEPC  
Bee House  
140 Eastern Avenue  
Milton Park  
Oxfordshire  
OX14 4SB

[///feasted.cloud.honeybees](http://feasted.cloud.honeybees)

+44 (0)1235 865555  
[marketing@miltonpark.com](mailto:marketing@miltonpark.com)  
[miltonpark.com](http://miltonpark.com)



Misrepresentations Act 1967: This information has been obtained from sources believed reliable, but has not been verified for accuracy or completeness. You should conduct a careful, independent investigation of the property and verify all information. Any reliance on this information is solely at your own risk. MEPC Milton GP Ltd and its associated agents and their logos are service marks of MEPC Milton GP Ltd and its associated agents, Inc. All other marks on this document are the property of their respective owners. Use of these images without the express written consent of the owner is prohibited. December 2025.